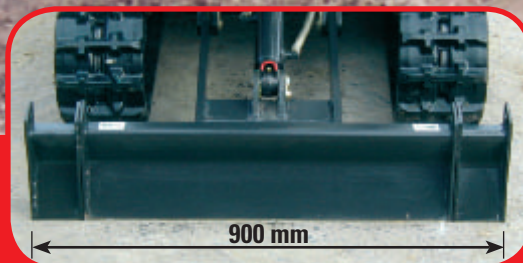
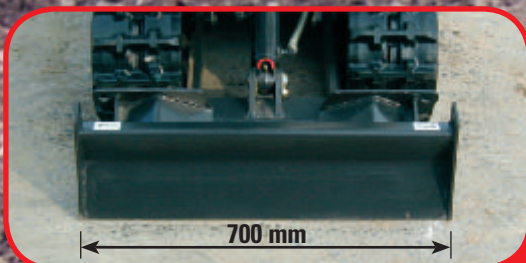




Bobcat®

316



EXCAVATORS

Specifications

Weights

316

Operating weight with TOPS canopy 820 kg

Engine

Make / model	Kubota / D722-E
Fuel / Cooling	Diesel / Liquid
Maximum power at 2000 RPM (ISO 9249)	7.4 kW
Torque at 1800 RPM (SAE Net)	39.2 Nm
Number of cylinders	3
Displacement	0.72 l
Bore / Stroke	67 mm / 68 mm
Alternator	12 V — 12 A
Starter	12 V — 1.0 kW

Controls

Steering	Direction and speed controlled by two hand levers or foot pedals
Hydraulics	Two joysticks control boom, bucket, dipperstick and upper structure slew

Hydraulic System

Pump type	Engine-driven double-section gear pump (2)
Pump capacity	10.2 l/min
Auxiliary flow	20.4 l/min
System relief pressure for implement circuits	162 bar
System relief pressure for auxiliary circuits	162 bar
Control valve	Nine-spool parallel type, open centre

Performance

Digging force, dipperstick	5900 N
Digging force, bucket	8300 N
Drawbar pull	8551 N
Ground pressure	23.5 kPa
Travel speed	2.0 km/h
Maximum digging depth	1550 mm

Slew System

Boom swing, left	87°
Boom swing, right	47°
Slew circle	Single row shear-type ball bearings with internal gear
Slew drive	Orbit motor
Slew rate	8.5 RPM

Traction

Track width, rubber, standard	180 mm
Number of track rollers per side	2
Gradeability travelling down or backing up slopes	25°

Brakes

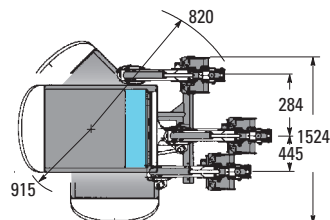
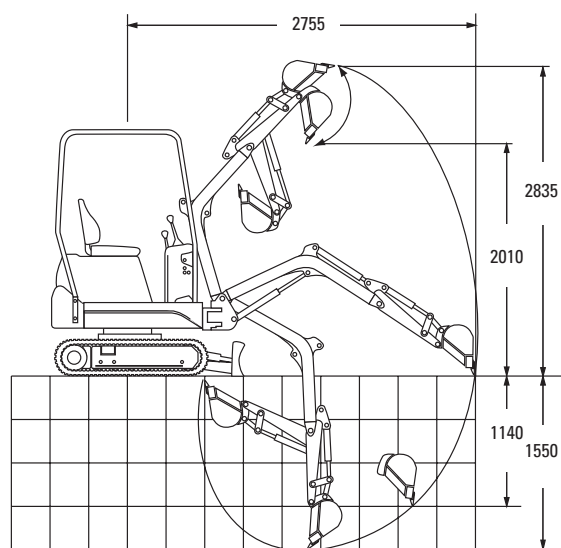
Travel brake	Hydraulic lock on motor
Slew brake	Hydraulic lock on motor and pin lock

Fluid Capacities

Cooling system	3.8 l
Engine lubrication plus oil filter	3.1 l
Fuel reservoir	9.0 l
Hydraulic reservoir	9.5 l
Hydraulic system	13.0 l

Working Range

All dimensions in mm.



Dimensions

All dimensions in mm.

