



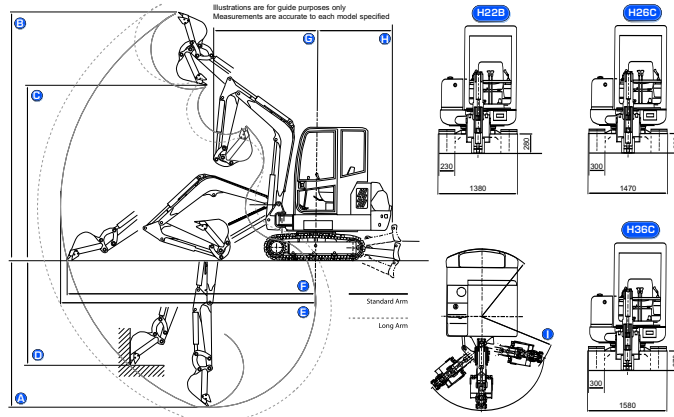
Features

Hanix Excavators employ best of breed Japanese technology, coupled with extremely high quality control, robust construction and simplified mechanical, hydraulic and electrical systems. These features give you, the customer, exceptional product reliability, integrity in all environments and overall increased product life. All these points give you and your business the advantage of greatly increased return on investment and unparalleled user satisfaction.



- 1 **HYDRAULIC SYSTEM** - Ease of access and system circuit identification of Hydraulic Hosing. All components are sourced from premium suppliers to ensure and maintain supreme quality for the range of products.
- 2 **ENGINE** - Utilizing world renowned reliability of Mitsubishi engines. Provided by an extensive engine dealer network throughout the UK and Europe.
- 3 **CABIN** - Due consideration for operator comfort and equipment refinements.
- 4 **STRUCTURE** - Use of robust structure and design to support the arduous of excavator durability.
- 5 **SERVICEABILITY** - With the engineer in mind ease of servicing access has been made paramount.

All pictures above relate to the H36C



		H22B	H26C	H36C
Machine weight (Cab-Rubber / Cab-Steel)	kg	2200 / 2250	2940 / 3020	3490 / 3570
Dimension (length / width / height)	mm	4075 / 1380 / 2250	4420 / 1470 / 2385	5010 / 1580 / 2420
Standard bucket capacity / width	m ³ /mm	0.06 / 450	0.07 / 450	0.10 / 590
Engine				
Model	—	Mitsubishi L3E	Mitsubishi S3L2	Mitsubishi S3L2
Displacement	cc	952	1318	1318
Rated power	—	12.5kW / 17.0ps / 2400rpm	17.7kW / 24.1ps / 2100rpm	19.9kW / 27.0ps / 2400rpm
Fuel tank capacity	lit	29	42	42
Working Range				
(A) Max. digging depth (Std / Lng)	mm	2365 / 2665	2610 / 2900	3130 / 3425
(B) Max. digging height (Std / Lng)	mm	3745 / 3945	4380 / 4575	5010 / 5215
(C) Max. dumping height (Std / Lng)	mm	2510 / 2705	3020 / 3220	3540 / 3745
(D) Max vertical digging depth (Std / Lng)	mm	1795 / 2090	1870 / 2140	2290 / 2560
(E) Max. digging radius (Std / Lng)	mm	4065 / 4355	4590 / 4880	5180 / 5465
(F) Max. reach at ground (Std / Lng)	mm	3965 / 4247	4470 / 4765	5070 / 5355
(G) Min. turning radius front	mm	1745	1890	2060
(H) Rear turning radius	mm	1255	1350	1410
(I) Min. turning radius swing	mm	1405 (Lng 1445)	1530	1700
Boom swing angle (L / R)	deg	80 / 50	80 / 50	80 / 50
Performance				
Max. digging power (Bucket / Arm Std / Lng)	kN	16.3 / 13.7 (16.3 / 9.2)	25.6 / 15.6 (25.6 / 13.5)	27.9 / 17.9 (27.9 / 15.7)
Travelling speed (low / high)	km/h	2.2 / 3.8	2.8 / 4.0	2.5 / 4.5
Slew speed	min ⁻¹	11.5	10.3	8.7
Hydraulic System				
Pump type	—	Piston 2 + Gear 1	Piston 2 + Gear 1	Piston 2 + Gear 1
Oil flow quantity	lit/min	24 / 24 / 15.6	33.6 / 33.6 / 22.1	42 / 42 / 25.2
PTO Oil flow quantity	lit/min	48.0	55.7	67.2
Main relief pressure	MPa	18.6 / 18.6 / 17.2	20.6 / 20.6 / 17.2	20.6 / 20.6 / 17.2
Hyd. tank capacity	lit	33	50.5	50.5

Specifications are subject to alterations without notice

HANIX
Mini Excavators

Hanix Europe Limited
Unit B Alliance Ind Estate
Windmill Lane • Denton
Manchester • M34 3SP
United Kingdom

www.hanixeuropa.com

Tel: 0044 (0)161 335 2330
Fax: 0044 (0)161 335 2349
Email: sales@hanixeuropa.com

November 2005



H22B

H26C

H36C