

USER INSTRUCTIONS FOR DOMESTIC CARPET CLEANING MACHINE

I. SAFETY - IMPORTANT - Please read before use

Before use carry out a visual inspection of the machine. Make sure the flex and plug are undamaged. Check the body of the machine for damage. If there is any damage DO NOT use the machine. Contact the store for a replacement machine. Read these instructions thoroughly before use. If you have any queries please call us on 0113 200 8200.

This machine must only be used in a horizontal position, with all wheels on a solid flat surface.

Do not allow the cable to come into contact with any surface or objects that could damage it. Do not run the cleaning machine over its flex.

Exercise caution when using this machine. Never allow children near the machine when in use.

Do not leave the machine unattended when it is plugged in. When this machine is not in use, always unplug from the mains.

Turn the machine off before fitting or changing accessories.

Keep the machine above freezing temperature. Do not use boiling water on the machine. Never put the machine in water. Do not vacuum more liquid than you spray on the carpet.

Always use the handle to manoeuvre the machine. DO NOT pull the machine by its hose or flex.

This machine is not a vacuum cleaner. DO NOT operate on a dry floor.

Please clean the machine before returning to the store. Instructions for cleaning the machine are detailed below.

DO NOT use Clantex machines or cleaning products on: Non-colourfast fabrics; Natural fibres e.g. jute, sisal or sea grass; hand-knotted, braided, silk or wool oriental rugs. Silk, Haitian cotton, corduroy or leather. Some stains may be impossible to remove completely. Never stand the machine on water sensitive wood effect laminate flooring. Isolate the machine from these surfaces with a non-porous protective sheet.

It is important that you check before using the machine that your carpet is securely fixed by strong adhesive, carpet grippers or floor tacks. Make sure your carpet is securely fixed and any seams are tightly sewn together or securely bonded with seaming tape.

DO NOT use bleach, dye, household cleaners or products other than those distributed and authorised by Clantex. Use of unapproved products may cause permanent damage to your carpets or upholstery. This is an electrical appliance – DO NOT allow the machine or its flex to sit in standing water whilst operating.

2. GETTING STARTED

Always conduct a colourfastness test before commencing cleaning. Method; apply neat detergent or pre spotting stain remover with a clean white cloth to an inconspicuous area. Rub gently. If any colour bleeds onto this cloth do not continue.

NEVER over wet your carpet or upholstery. Do not repeat a wet pass more than twice even on heavily soiled or spotted areas. If additional cleaning is needed please allow your carpet to dry first before re-application. Berber, multi level or looped pile carpets have a tendency to retain moisture; avoid repeating wet passes on these types of carpet.

To avoid re-soiling a cleaned area always work backwards. Aim to finish cleaning the room at a doorway. Having finished cleaning leave the carpet to dry completely. Drying times are dependent on ambient temperature. Your carpet should dry in around two hours.

Turning on your central heating or opening windows can speed up drying times.

3. CLEANING PROCEDURE

Empty the room of furniture where possible. Vacuum the entire carpet with a vacuum cleaner. If you are unable to remove your furniture, use plastic sheet or aluminium foil to create a waterproof barrier between your furniture's castors or legs and cleaned carpet to prevent potential staining from rust or dyes.

If you need to walk on the damp carpet DO NOT wear shoes, slippers or socks, all may contain non-fast dye which may permanently stain the carpet. ONLY walk on the carpet in clean bare feet and only if it is safe to do so.

Tie up any long curtains that touch the floor.

PLEASE SEE REVERSE FOR STEP BY STEP CLEANING INSTRUCTIONS

4. FINISHING OFF

1. Switch off the vacuum and solution switches.
2. Disconnect the vacuum and solution hoses from the wand/hand tool. The vacuum hose is removed by separating it from the wand/hand tool. The clear solution hose is disconnected by sliding the grey collar backwards. Rinse off any residual lint and fibres from the cleaning heads.
3. To empty / clean the solution tank, ensure that there is either residual cleaning solution or water in the tank, then switch on the vacuum and insert the vacuum hose into the solution tank ensuring that all liquid is removed. Emptying the solution tank this way will rinse the vacuum hose and transparent cover.
4. Unplug the machine.
5. Disconnect the vacuum and solution hoses from the machine. Pull the vacuum hose off the blue spigot. The solution hose is disconnected by sliding the grey collar backwards.

REMEMBER: PLEASE CLEAN THE MACHINE BEFORE RETURNING IT THE TO STORE.

5. CLEANING THE MACHINE

1. Rinse the wand, hand tools and hoses. Dry with a cloth.
2. Stow the wand, hand tool and vacuum hose into the accessory bag.
3. Empty and rinse out the white waste bucket and transparent cover and dry with a cloth
4. Wipe the solution tank until dry

HELP LINE If at any time you have any problems or queries with the operation of the machine please ring **0113 200 8200**

If you had a good experience with Clantex products tell your friends. If not tell us on 0113 200 8200

USER INSTRUCTIONS FOR DOMESTIC CARPET CLEANING MACHINE

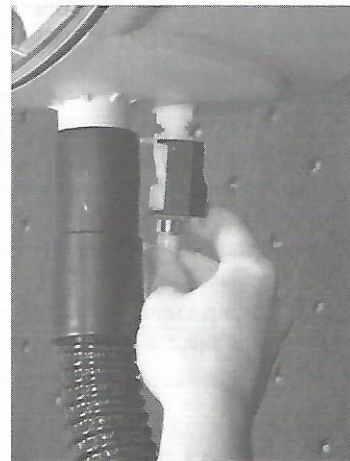
Step 1

Push fit the vacuum hose onto the blue spigot.



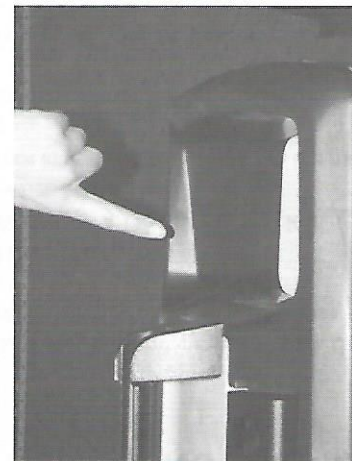
Step 2

Push fit the solution hose onto the white connector. It has been seated correctly when the collar clicks into place. Connect vacuum hose to the Wand Assembly and the clear solution hose to wand assembly until it clicks into place.



Step 3

Following the instructions on the reverse of the carpet shampoo and using the white waste bucket (located under the transparent cover at the front of the machine) fill the solution tank at the rear of the machine.



Step 4

Replace the white waste bucket at the front of the machine and re-seat the transparent cover. Caution incorrect seating of the transparent cover may impair the machine's vacuum lift performance.



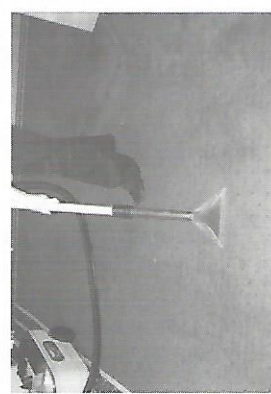
Step 5

Simultaneously press the **vacuum switch** and **solution pump switch**.



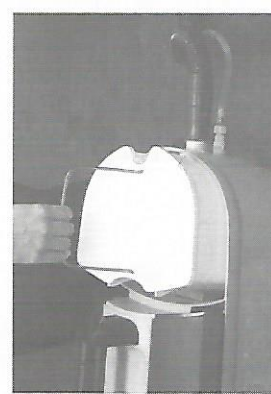
Step 6 and step 7

Press the wand/hand tool head firmly against the area to be cleaned. Squeeze the trigger to spray the cleaning solution. Whilst maintaining a firm downward pressure, pull the wand or hand tool slowly backwards to extract the dirty cleaning solution. **Caution:** never over wet any carpet or upholstery. Do not repeat a wet pass more than twice. If two wet passes failed to remove any stains, always wait for the carpet or upholstery to dry before reapplication.



Step 8

Lift off the **transparent cover**. Remove the **waste bucket** and empty. Repeat steps 3 to 8 until cleaning is completed.



Step 9

For upholstery simply replace wand with hand tool and apply as per carpet cleaning technique.

