

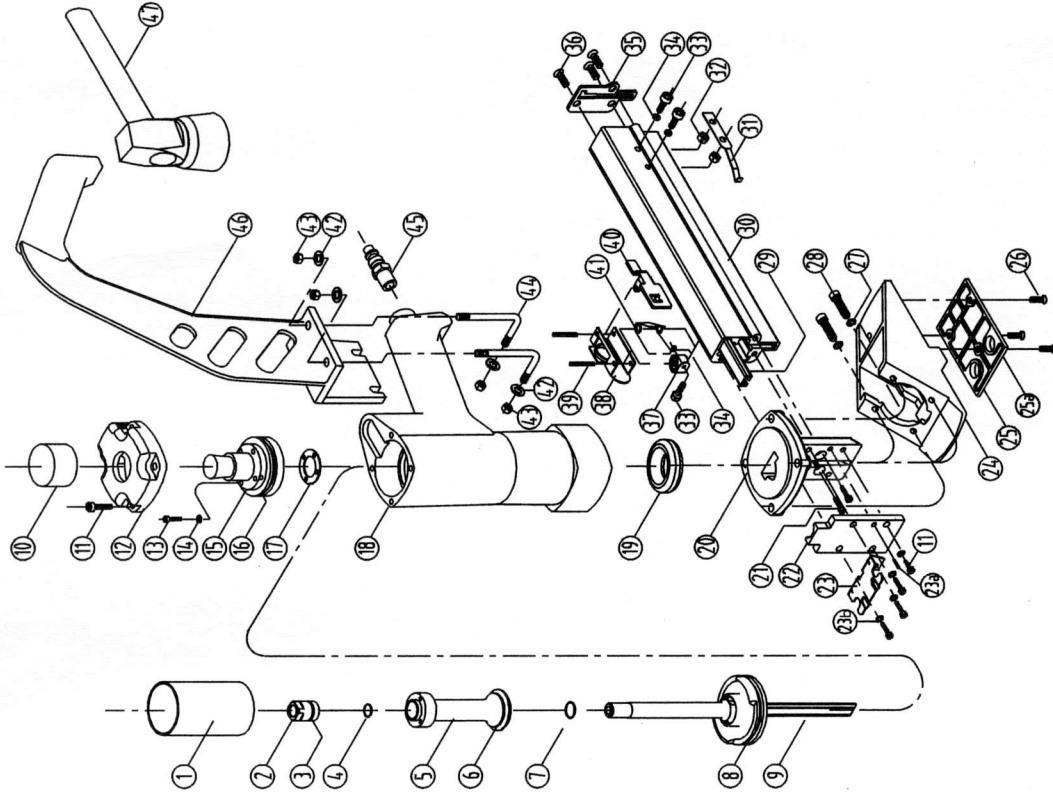
# PARTS LIST

Refer to the Exploded View Drawing for the location of parts listed below

# HFN1 Floor Nailer

# EXPLODED VIEW DRAWING

| ITEM | DESCRIPTION       | ITEM | DESCRIPTION    |
|------|-------------------|------|----------------|
| 1    | CYLINDER BUSHING  | 24   | SHOE           |
| 2    | PLUNGER           | 25   | SPACER         |
| 3    | O-RING 19.2 X 1.8 | 26   | SCREW          |
| 4    | O-RING 15.9 X 1.8 | 27   | SPRING WASHER  |
| 5    | POPPET            | 28   | SCREW          |
| 6    | O-RING 42.5 X 5.4 | 29   | RAIL           |
| 7    | O-RING 17.5 X 2.6 | 30   | MAGAZINE       |
| 8    | O-RING 57.4 X 3.5 | 31   | SPRING PIECE   |
| 9    | PISTON ASSEMBLY   | 32   | NUT            |
| 10   | HAMMER FACE       | 33   | SCREW          |
| 11   | SCREW             | 34   | WASHER         |
| 12   | CYLINDER CAP      | 35   | MAGAZINE CAP   |
| 13   | SCREW             | 36   | SCREW          |
| 14   | SPRING WASHER     | 37   | COIL SPRING    |
| 15   | POPPET ACTUATOR   | 38   | BRACKET        |
| 16   | O-RING 54.2 X 3.5 | 39   | PIN            |
| 17   | SEAL              | 40   | FEEDER SHOE    |
| 18   | BODY              | 41   | TORSION SPRING |
| 19   | BUMPER            | 42   | WASHER         |
| 20   | NOSE              | 43   | NUT            |
| 21   | SCREW             | 44   | CLAMP SCREW    |
| 22   | BLADE GUIDE       | 45   | AIR PLUG       |
| 23   | BAFFLE PLATE      | 46   | ARM            |
| 23a  | PIN               | 47   | HAMMER         |
| 23b  | SPRING WASHER     |      |                |



#25-Installed. (Spacer for 25/32" Flooring)

#25a-Spacer is included with tool, not installed. (Spacer for 1/2" Flooring)