



## Imagine new possibilities.

It's in your hands. Bosch Professional.

Enhance your business with infrared measuring:  
Bosch GTC 400 C and GIS 1000 C.

[www.bosch-professional.com/gtc](http://www.bosch-professional.com/gtc)

## A fact is a fact. And a picture.

How fast facts lead to picture-perfect business for you...

Take a moment to look at your daily business – with all its tasks, challenges, questions and uncertainties that occur: What would it be like to make the invisible visible? To pin down problems to coloured pictures which are easy to interpret? And then act and work accordingly?

The buzzword is: thermal imaging. Whereas only some years ago thermal imaging cameras were predominantly used by appraiser, architects or specialised companies, with Bosch GTC 400 C Professional you can also let infrared measuring enhance your daily business.

No matter if your business is heating and air conditioning, electricity, window installation or dry walling: with the help of thermal imaging you can easily take measurements professionally to settle first things first. Is there a cable overload? Are there leaky fittings or floor heating pipes? Where do the heating pipes run in the wall or floor? Are the radiators vented? What is the cause for the disturbing draft in the office space? What is the actual condition of the insulation?

## Simply create facts. Trust is good, GTC 400 C Professional is better.

### This is what our new thermal camera offers you and your daily business:

- ▶ Intuitive handling, easy to understand – opening up a new level of professionalism.
- ▶ Gives you valuable support before the job: quick measuring and thermal imaging helps you avoid errors and find potential sources for problems faster.
- ▶ Helps increase transparency for you and your clients to gain their confidence – a clear asset to strengthen customer loyalty and the acquisition of new customers.
- ▶ Easy documentation of the measured results through wireless connection with the Measuring Master App – you can share the pictures with customers and colleagues on site via smartphone and tablet or via PC comfortably from at home with the GTC transfer software.
- ▶ Turns problems into tasks: the visualisation with thermal imagery simplifies communication with your clients, e.g. you can show them right away what the issue is and what needs to be done – because the thermal image says more than words could.
- ▶ Visual image to increase transparency.

In short: with the new thermal camera Bosch GTC 400 C Professional you create facts to foster your business and to work more efficiently – with less sources of error. **How good does that sound to you?**

# The new thermal camera Bosch GTC 400 C Professional:

## Visualise temperature differences within seconds and document the results with ease.

The new Bosch GTC 400 C Professional is the robust and easy to understand solution to visualise temperatures and to process data easily. It is state-of-the-art technology that fits into your budget, bringing all the benefits of thermal imaging into your daily business.

- 1 Visual camera**  
integrated to display and save the real image together with your measurements
- 2 Infrared sensor resolution**  
of 160 x 120 for detailed thermal images
- 3 Big 3.5" colour display**  
for better view on measurement results
- 4 Micro USB**  
for easy data transfer to your computer – GTC transfer software helps create reports easily
- 5 Integrated WiFi Hotspot**  
for fast and easy picture transfer to Bosch Measuring Master App
- 6 Robust**  
and protected against dust and splash water (IP53)
- 7 Dual power source**  
runs with 12 V-Li battery pack or with standard alkaline batteries (AA)



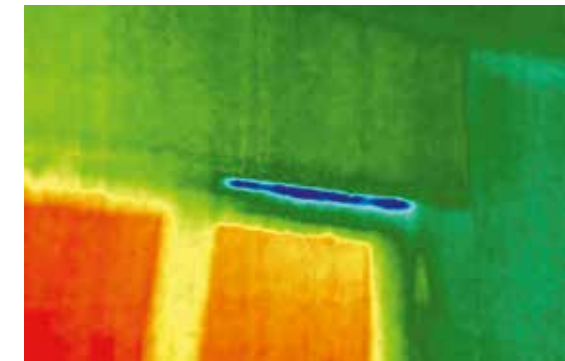
## HVAC installations: Turning problems into tasks.

The Bosch thermal imager GTC 400 C Professional is the ideal tool to make detailed measurements for a picture-perfect analysis of the existing conditions and heat distribution – so that you can draw the right conclusions for your work.



## Interior installations: Seeing. Understanding. Avoiding mistakes.

Thermal imaging is a reliable way for you to get a good picture of what the conditions are – it creates facts that enable you to proceed with your work much more efficiently and to avoid errors.



### It helps you to:

- ▶ Locate heating pipes in floors or walls
- ▶ Check radiators if they are vented
- ▶ Check the routing of heating cables

- ▶ Check floor heating's distribution box, i.e. are the pipes correctly labelled
- ▶ Find leakages

### It helps you to:

- ▶ Evaluate the actual condition of insulations
- ▶ Avoid errors when drilling, i.e. damage floor heating pipelines

- ▶ Detect damp patches or leakages (moist areas)

## Electrical installations: A new dimension of efficiency.

Thermal imaging with Bosch GTC 400 C Professional is able to give you reliable answers to many of your questions that occur in daily business on-site.



## Window and door installations: Weak point detection at a glance.

Thermography is a great tool for you to evaluate given conditions on-site correctly and fast – to take the right measures accordingly.



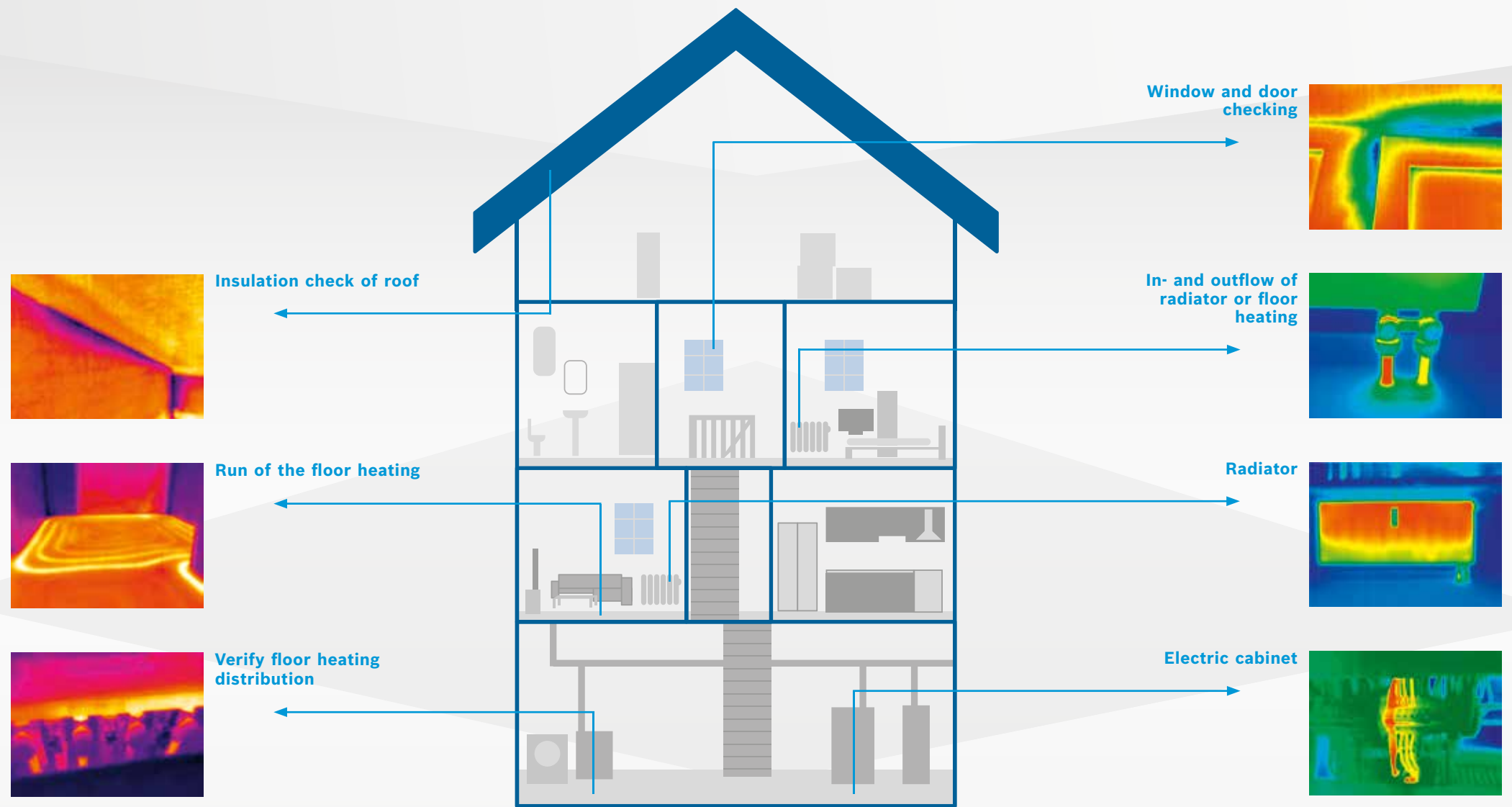
### It helps you to:

- ▶ Check switch cabinets for loose contacts
- ▶ Check electrical components, e.g. printed circuit boards of electronic devices
- ▶ Check fuses and contactors
- ▶ Check cables if they are broken or overloaded

### It helps you to:

- ▶ Check the insulation of windows, doors and shutter boxes
- ▶ Detect sources for drafts
- ▶ Pinpoint water intrusion and find leaky installations in basements

# 19,200 temperature points for numerous applications.



# Bosch GIS 1000 C Professional:

Measure temperatures and humidity with precision and document the results with ease.

With the thermal detector Bosch GIS 1000 C Professional you discover a whole new world of measurement precision and professionalism at work. It documents temperature and humidity measurements and its visual camera directly connects the measured spot temperature with the respective visual image taken. The measured values can be transferred to the Bosch Measuring Master App on smartphones or tablets. This makes the GIS 1000 C Professional a highly useful device for HVACs to quickly measure surface and ambient conditions – all contactless and during running operation.

- 1 Visual camera**  
to save measurement in a visual image for documentation
- 2 Precise and exposed sensor**  
for ambient temperature and relative air humidity
- 3 Bluetooth®**  
and micro USB for data transfer
- 4 High accuracy**  
and wide temperature range:  $-40\text{ }^{\circ}\text{C}$  up to  $1,000\text{ }^{\circ}\text{C}$
- 5 2.8" colour display**
- 6 Dual power source**  
runs with 12 V-LI battery pack or with 4 x standard alkaline batteries (AA)
- 7 Contact measurement (K-type)**





## Get connected to get ahead.

### When digital technologies and our infrared measuring tools work hand in hand.

The trend towards digitisation in the trades offers professional craftsmen like you valuable options to optimize procedures in your daily business.

How about this: figure yourself connecting your Bosch infrared measuring tool with your smartphone or tablet. How about sharing your measured data immediately with your colleagues or customers? Figure yourself having all data at hand – whenever or wherever you need it!



## Simply work smarter.

Via the WiFi Hotspot and with the Bosch Measuring Master App the measurements you saved (incl. thermal image, visual image and temperature values) can be passed on for making arrangements and taking action. Also, they can be immediately shared with clients and colleagues – even while you are still on site.

With the GTC software you can easily transmit the data and images you generated to your PC in your office or comfortably to your workstation at home – for documentation, further planning or to generate precise offers for your clients.



In short: connectivity made by Bosch in combination with our professional infrared measuring tools makes your work more efficiently and saves you precious time.



## Next steps local production

- 1 Download file will be available in Mediapool (s. Mediapool ID).  
**Please note:** All provided files in the mediapool are designed to be produced as described within the information sheet for the advertising material and base on PDF-X3-Standard PDF/X-3:2002 (ISO 15930-3), output profile ISO Coated v2 (ECI).
- 2 Initiate translation with STAR.
- 3 Generate local part number (TTNR). Provide it for implementation into layout to STAR and provide it logistic to create data in SAP that goods can be booked in.
- 4 Approve translation – STAR will afterwards finalize data and provide you print-files in your language.
- 5 Initiate production with local supplier and please follow the mentioned material specifications to ensure a good quality.
- 6 Order QMM documents from supplier according to the regulations of Bosch quality management department and get QMM approval from responsible quality manager of your business unit.
- 7 Start production with your local supplier and specify delivery either IDC/LDC or direct delivery to customer.

**QMM and N2580:** According to Bosch regulations.

For further information please check:

<http://purchasing.bosch.com/en/de/info/download/downloads.html>

**Packaging, labeling and shipping:** According to Bosch regulations.

For further information please check:

[https://wy-files.netzwerk-p.com/file/29678\\_e1ec5d71](https://wy-files.netzwerk-p.com/file/29678_e1ec5d71)

# Information sheet for local production



## Leaflet GTC 400 C Professional

- The leaflet features the benefits of the Bosch GTC 400 C Professional.

Dimensions	148 x 210 mm, DIN A5 portrait format
Scope	16 pages
Material	135 gsm magazine paper semi gloss
Print	4/4 colour printing (offset printing or digital printing), printed on all sides with all-over satin dispersion coating
Processing	Fold, saddle stitching, final trim to final format, collect 10 pieces and shrink-wrap the bundle
QMM and N2580	According to Bosch regulations under <a href="http://purchasing.bosch.com/en/de/info/download/downloads.html">http://purchasing.bosch.com/en/de/info/download/downloads.html</a>
Packaging, labeling and shipping	According to Bosch regulations under <a href="https://wy-files.netzwerk-p.com/file/29678_e1ec5d71">https://wy-files.netzwerk-p.com/file/29678_e1ec5d71</a>
<b>Mediapool ID</b>	<b>255892</b>
<b>Available in Mediapool from</b>	<b>CW 33/2017</b>