

**⚠ WARNING**



**Wear appropriate protective equipment including safety glasses and leather gloves. Drains may contain hazardous chemicals or bacteria.**

If you have any question concerning this RIDGID® product:

- Contact your local RIDGID distributor.
- Visit [www.RIDGID.com](http://www.RIDGID.com) or [www.RIDGID.eu](http://www.RIDGID.eu) to find your local RIDGID contact point.
- Contact RIDGID Technical Services Department at [rtctech-services@emerson.com](mailto:rtctech-services@emerson.com), or in the U.S. and Canada call (800) 519-3456.

**Specifications**

The Kwik-Spin cleans drain lines up to 1½" in diameter. It is not recommended for toilets. The cable is positively retained in the drum to prevent cable pullout.

**Before Use**

Inspect Kwik-Spin. Do not use if damaged. Inspect the drain. Determine if chemicals are present. Some chemicals have specific health and handling considerations that should be provided by the manufacturer. Confirm the Kwik-Spin is appropriate for the job.

**Drain Access**

- Thread through crosshairs (Figure 1).
- Unscrew cleanout plug or remove trap (Figure 2).
- Pop-up Drain: Remove lift rod and drain plug (Figure 3).
- Bathtub overflow: Remove overflow plate and internal mechanism (Figure 4).



Figure 1

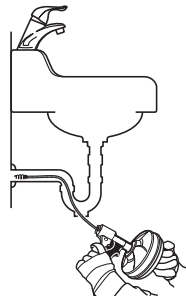


Figure 2

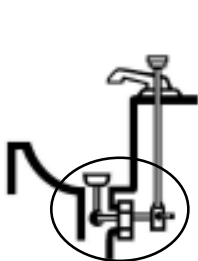


Figure 3

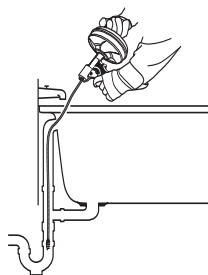


Figure 4

**Operating Instructions**

1. Insert cable into drain. Position unit as close to drain as possible. Squeeze trigger and press lock button to engage the AUTOFEED® lock (Figure 5).
2. Turning drum clockwise advances cable. Counter-clockwise retracts cable. Advance cable until you encounter the blockage (Figure 6).
3. Work cable through blockage. DO NOT force cable. Work cable back and forth 2-3 times
4. Retract cable (Figure 7). After flow is established, if possible run water to clear debris and clean cable (Figure 8).
5. Squeeze trigger and press lock button to disengage AUTOFEED® lock.
6. Rinse cable and drum. Air dry before storage to prevent rust.

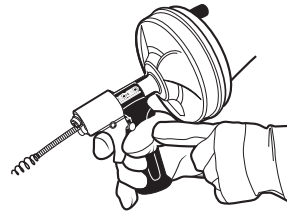


Figure 5

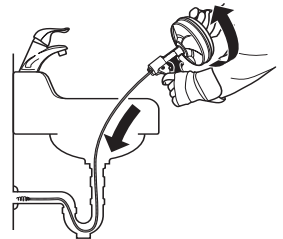


Figure 6

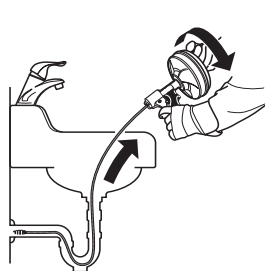


Figure 7

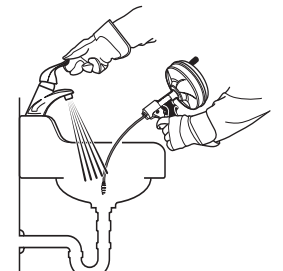


Figure 8

**KWIK-SPIN : Mode d'emploi**

**⚠ AVERTISSEMENT**



**Porter un équipement de protection, y compris des lunettes de sécurité et des gants de cuir. Les évacuations peuvent contenir des produits chimiques dangereux ou des bactéries.**

En cas de questions concernant ce produit RIDGID® :

- Consultez votre distributeur RIDGID.
- Consultez les sites [www.RIDGID.com](http://www.RIDGID.com) ou [www.RIDGID.eu](http://www.RIDGID.eu) pour localiser le représentant RIDGID le plus proche.